

Encore FR Pro Color



Light Efficiency:

7 Lumen/Watt

Light Quality:

CRI: 89.4

Color Temperature:

5902 K

Output: 3035 lm

Peak: 129502 cd

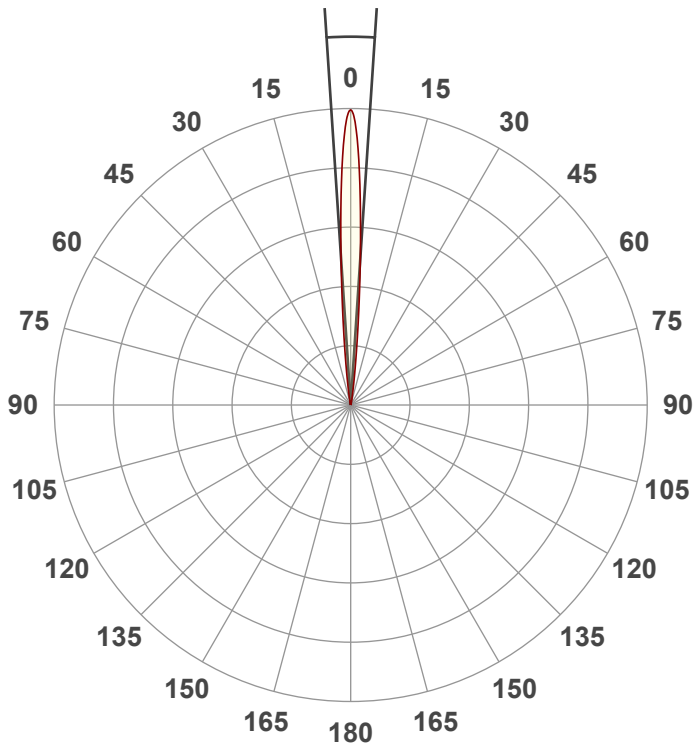
Power: 420 W

PF: 1.0



Beam Angle

7.5°



Test:

Zoom In Full On

Date:

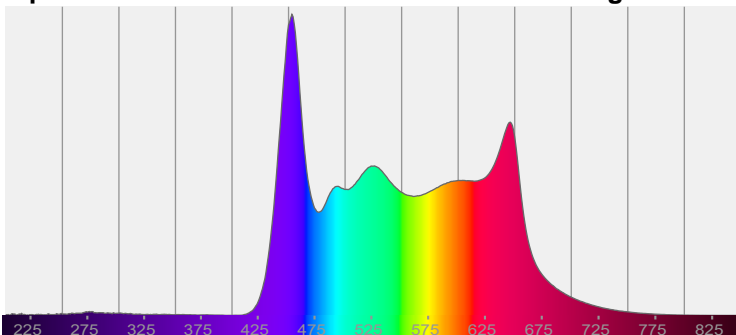
11/12/2021

Note:

CIE 1931
x: 0.325
y: 0.318

Spectra

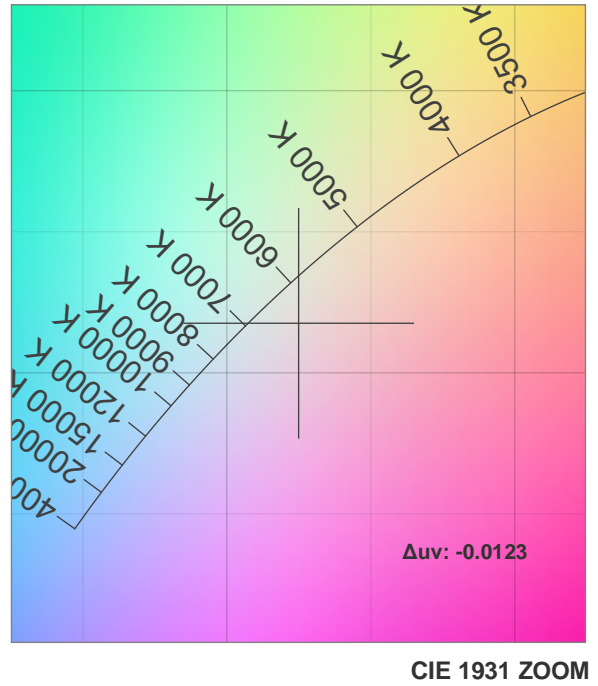
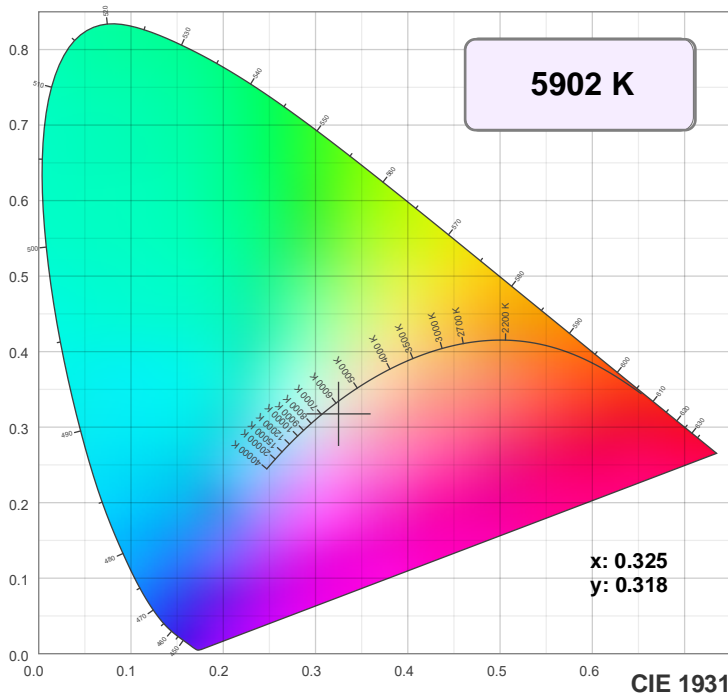
Dominant Wavelength: 829nm



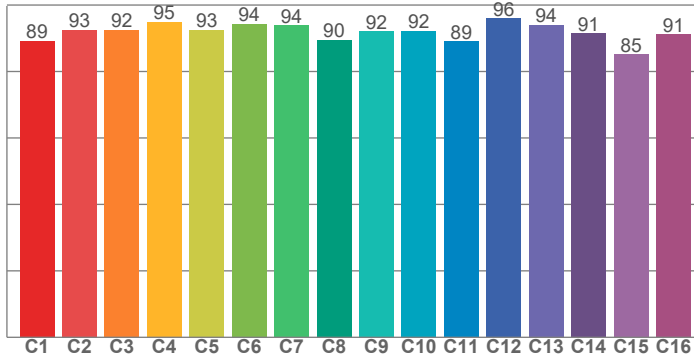
Power

Voltage: 116 V
Current: 3.61 A
Frequency: 0 Hz

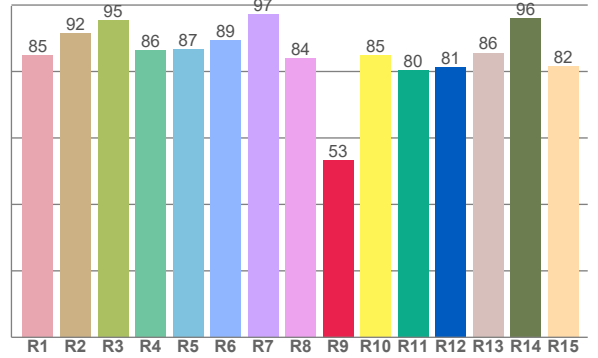
Color Details



TM30: 91.8



CRI: 89.4 (R1-R8)



CRI R values, only R1-R8 are used to calculate final CRI value

R1	R2	R3	R4	R5	R6	R7	R8	R9	R10	R11	R12	R13	R14	R15
84.8	91.5	95.5	86.4	86.8	89.3	97.1	84.1	53.3	84.8	80.4	81.3	85.7	95.9	81.5

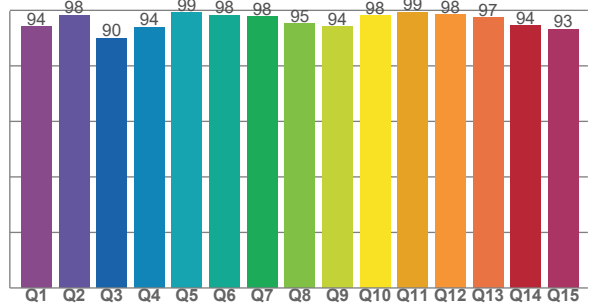
TM30 C values, 16 binned values out of total of 99 C values

C1	C2	C3	C4	C5	C6	C7	C8	C9	C10	C11	C12	C13	C14	C15	C16
89.2	92.5	92.5	95.0	92.5	94.3	93.9	89.5	92.1	92.3	89.0	95.9	94.1	91.5	85.2	91.2

CQS Q values

Q1	Q2	Q3	Q4	Q5	Q6	Q7	Q8	Q9	Q10	Q11	Q12	Q13	Q14	Q15
94.0	98.2	90.0	94.0	99.1	98.2	97.8	95.2	94.2	98.1	99.3	98.4	97.4	94.4	93.3

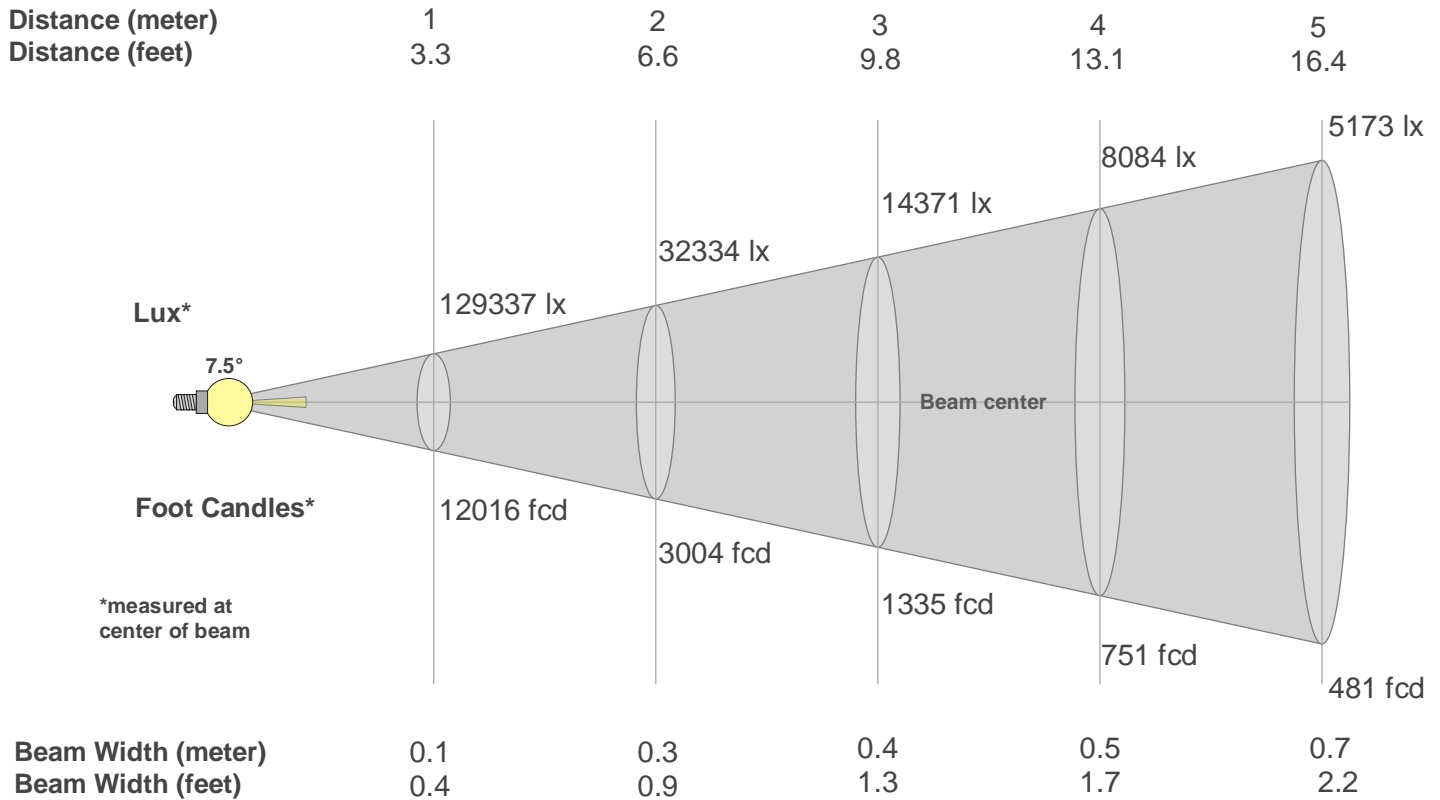
CQS: 95.3



Color Parameters

Color Temperature	Color Rendering Index	Red Component	Color Fidelity	Color Gamut	Color Quality Scale	Color Coordinate CIE 1931	Color Coordinate CIE 1931	Color Coordinate	Color Coordinate	Color Deviation from Black Body
CCT	CRI	CRI R9	TM30 Rf	TM30 Rg	CQS	x	y	u	v	Δuv
5902 K	89.4	53.3	91.8	105.8	95.3	0.325	0.318	0.211	0.309	-0.0123

Beam Details



Beam Intensities from 1-20m

m	1	2	3	4	5	6	7	8	9	10	11	12	13	14	15	16	17	18	19	20
ft	3.3	6.6	9.8	13.1	16.4	19.7	23	26.2	29.5	32.8	36.1	39.4	42.7	45.9	49.2	52.5	55.8	59.1	62.3	65.6
lx	129337	32334	14371	8084	5173	3593	2640	2021	1597	1293	1069	898	765	660	575	505	448	399	358	323
fcd	12015.8	3004	1335.1	751	480.6	333.8	245.2	187.7	148.3	120.2	99.3	83.4	71.1	61.3	53.4	46.9	41.6	37.1	33.3	30

Intensities in 0° C-plane

0°	1°	2°	3°	4°	5°	6°	7°	8°	9°	10°	11°	12°	13°	14°	15°	16°	17°	18°	19°
129K	123K	106K	83K	59K	40K	25K	15K	9K	6K	4K	2K	2K	1K	1K	1K	1K	0K	0K	0K
100%	95%	82%	64%	46%	31%	19%	12%	7%	4%	3%	2%	1%	1%	1%	1%	0%	0%	0%	0%

Intensities in 90° C-plane

0°	1°	2°	3°	4°	5°	6°	7°	8°	9°	10°	11°	12°	13°	14°	15°	16°	17°	18°	19°
129K	123K	106K	83K	59K	40K	25K	15K	9K	6K	4K	2K	2K	1K	1K	1K	1K	0K	0K	0K
100%	95%	82%	64%	46%	31%	19%	12%	7%	4%	3%	2%	1%	1%	1%	1%	0%	0%	0%	0%

Intensities in 180° C-plane

0°	1°	2°	3°	4°	5°	6°	7°	8°	9°	10°	11°	12°	13°	14°	15°	16°	17°	18°	19°
129K	123K	105K	82K	59K	40K	25K	15K	10K	6K	4K	3K	2K	1K	1K	1K	1K	1K	1K	0K
100%	95%	81%	64%	46%	31%	19%	12%	7%	5%	3%	2%	1%	1%	1%	1%	1%	0%	0%	0%

Intensities in 270° C-plane

0°	1°	2°	3°	4°	5°	6°	7°	8°	9°	10°	11°	12°	13°	14°	15°	16°	17°	18°	19°
129K	123K	105K	82K	59K	40K	25K	15K	10K	6K	4K	3K	2K	1K	1K	1K	1K	1K	1K	0K
100%	95%	81%	64%	46%	31%	19%	12%	7%	5%	3%	2%	1%	1%	1%	1%	1%	0%	0%	0%

Beam Angle 50%	Field Angle 10%	Cutoff Angle 2,5%	Intensity Ratio in 120° Cone	Intensity Ratio in 90° Cone
7.5°	14.7°	20.9°	100.0%	100.0%